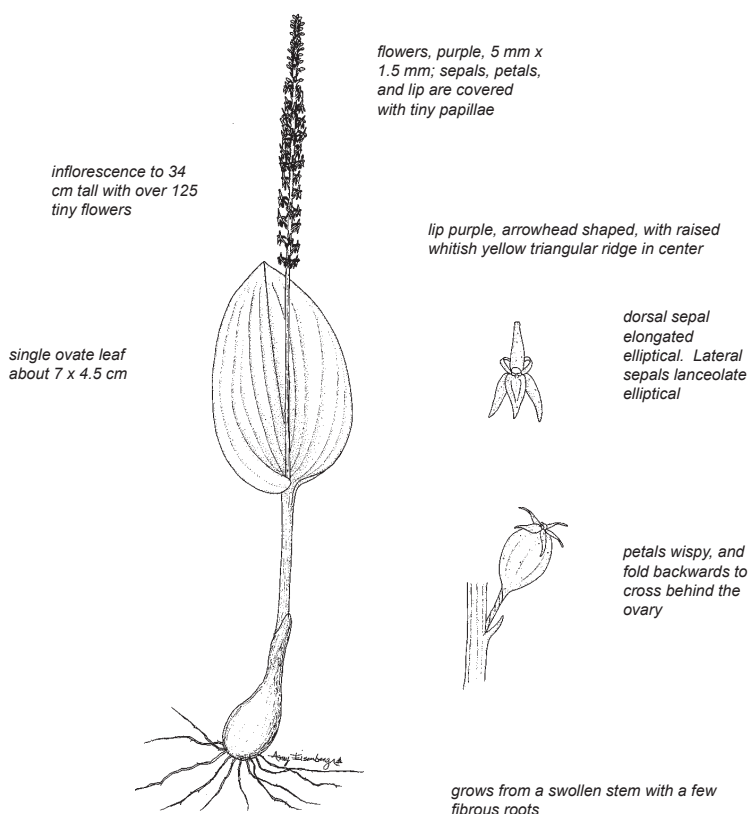


(NO COMMON NAME)

Malaxis porphyrea



Orchidaceae (Orchid Family)

Phenology: flowering from mid July until early September.

Management Responsibility: USFS (Apache-Sitgreaves NF, Coronado NF), DoD-US Army (Ft. Huachuca).

Synonyms: *Microstylis porphyrea* Ridley; *Microstylis purpurea* S. Watson; *Malaxis purpurea* (S. Watson) Kuntze.

Similar Species: none in Arizona; differs from *Malaxis tenuis* by color and shape of flowers. *M. porphyrea* has purple flowers while those of *M. tenuis* are green. Shape of lip and lateral sepals, and general appearance of inflorescence is also different.

Notes: most plants do not set fruit. Catalinas site has not been verified since 1917. In the Chiricahua Mountains, grows in a meadow with *M. tenuis* where both are subject to destruction by campers and vehicles.

References: Kuntze, 1891. Todsen, 1997.



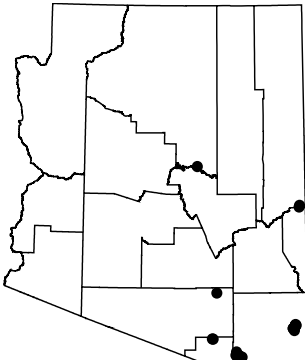
Malaxis porphyrea

© Ron A. Coleman

Habitat: mixed conifer forest between 7,000 and 9,200 ft (2100-2800 m) elevation. Most commonly found near slightly damp, mossy or grassy places in slightly open areas in forest.



© Ron A. Coleman



Range: known from the Huacahua, Santa Rita, Chiricahua, and Catalina mountains, and from two collections from Apache County; also found in New Mexico, Texas and northern Mexico.