

(NO COMMON NAME)

***Browallia eludens***

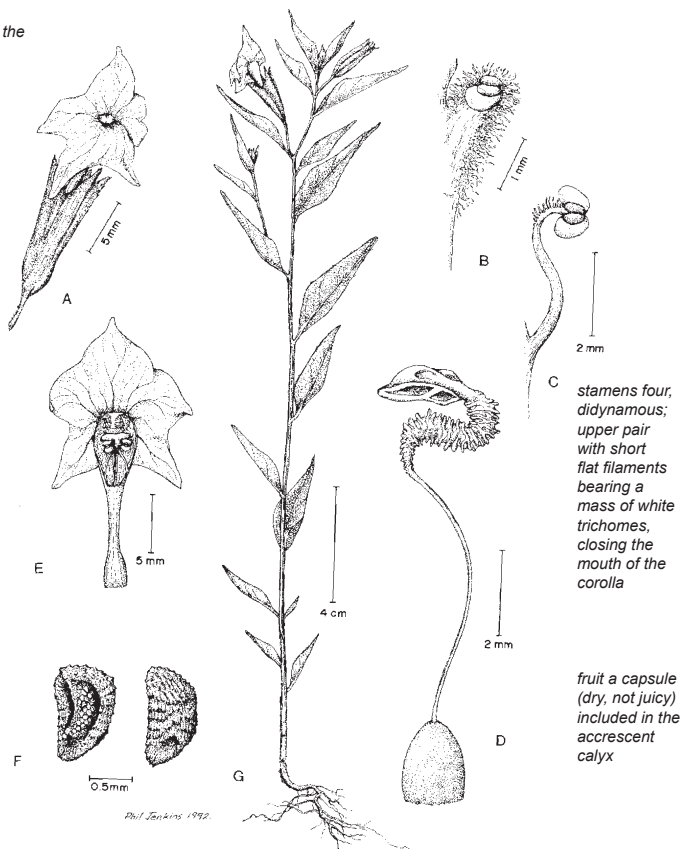
*Erect annuals 2-30 cm tall*

*flowers  
solitary in the  
axils*

*calyx 8-15  
mm long,  
5 lobed,  
strongly  
plicate*

*corolla  
zygomorphic,  
cream colored,  
the limb 6-12  
mm across,  
5-lobed with the  
tips reflexed, the  
upper lobe the  
largest; corolla  
tube 10-17 mm  
long*

*seeds 1.1-1.5  
mm long,  
numerous,  
dark brown  
when mature*



*leaves alternate, entire, 4 cm long and 1  
cm wide, rhombic-lanceolate*

## *Solanaceae (Potato Family)*

**Phenology:** flowering July and early August.

**Management Responsibility:** USFS (Coronado NF).

**Notes:** scarce and very small in dry years, then becomes abundant in wet years.

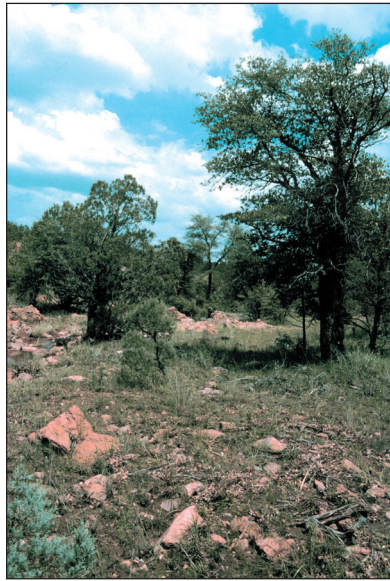
**References:** AGFD, 1998g. Van Devender and Jenkins, 1993.



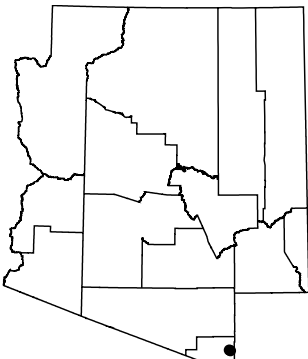
©Phil Jenkins

*Browallia eludens*

**Habitat:** grows mainly along temporary streams in rather fine deposition from a rhyolitic, in Madrean woodland at about 5,250 ft (1600 m) elevation substrate.



©Phil Jenkins



**Range:** Canelo Hills; also found in a few additional locations in north-western Mexico.