

Fabaceae (Pea Family)

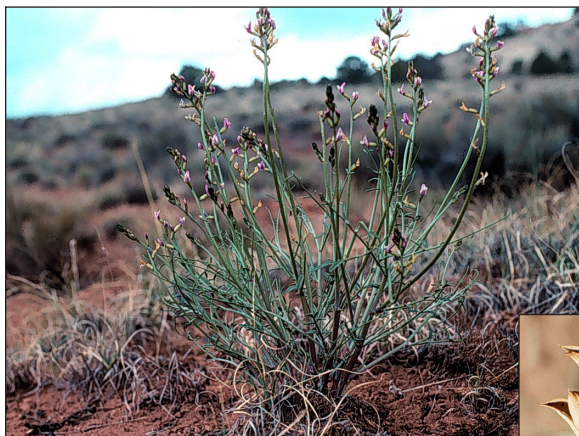
Phenology: flowering/fruiting May-June.

Management Responsibility: BLM (AZ Strip Field Office).

Similar Species: distinguished by its connate-sheathing lower stipules from other rush-like *Astragalus* in Arizona and from *A. convalarius* (which has connate-sheathing lower stipules) by its plumper pods and selenium scented herbage.

Notes: this variety is disjunct by 100 miles from the common, typical variety in central Utah and Nevada. The stiff leathery pods may stay on the plant through the summer.

References: Barneby, 1989. Welsh, 1993.



John Anderson/BLM

Astragalus toanus
var. *scidulus*

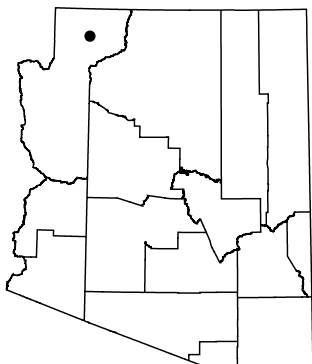


John Anderson/BLM

Habitat: seleniferous, red Moenkopi soils around base of buttes with mixed desertscrub and scattered juniper and pinyon, 4,900-5,000 ft (1490-1525 m) elevation.



John Anderson/BLM



Range: only known from the bases of Diamond Butte and Twin Butte at the north end of Upper Hurricane Valley.